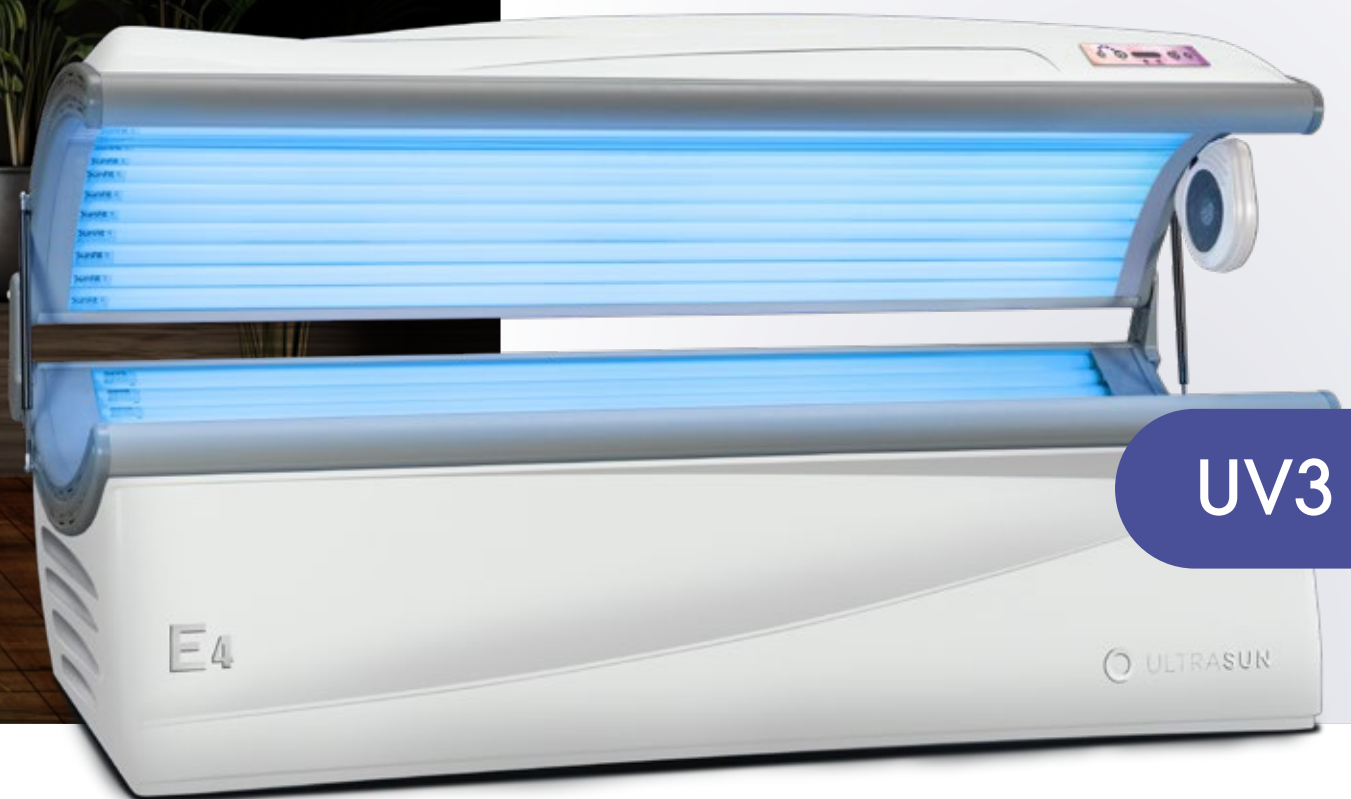


TECHNICAL PRODUCT SHEET

E4



28 LAMPS

Ultrason E4

Pure & Simple Glow



View on our website

Standard equipped with



BodyCooler



Electronic
Ballasts



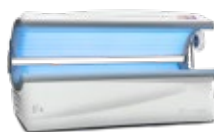
Solar Control

Additional options



Hybrid Lamps

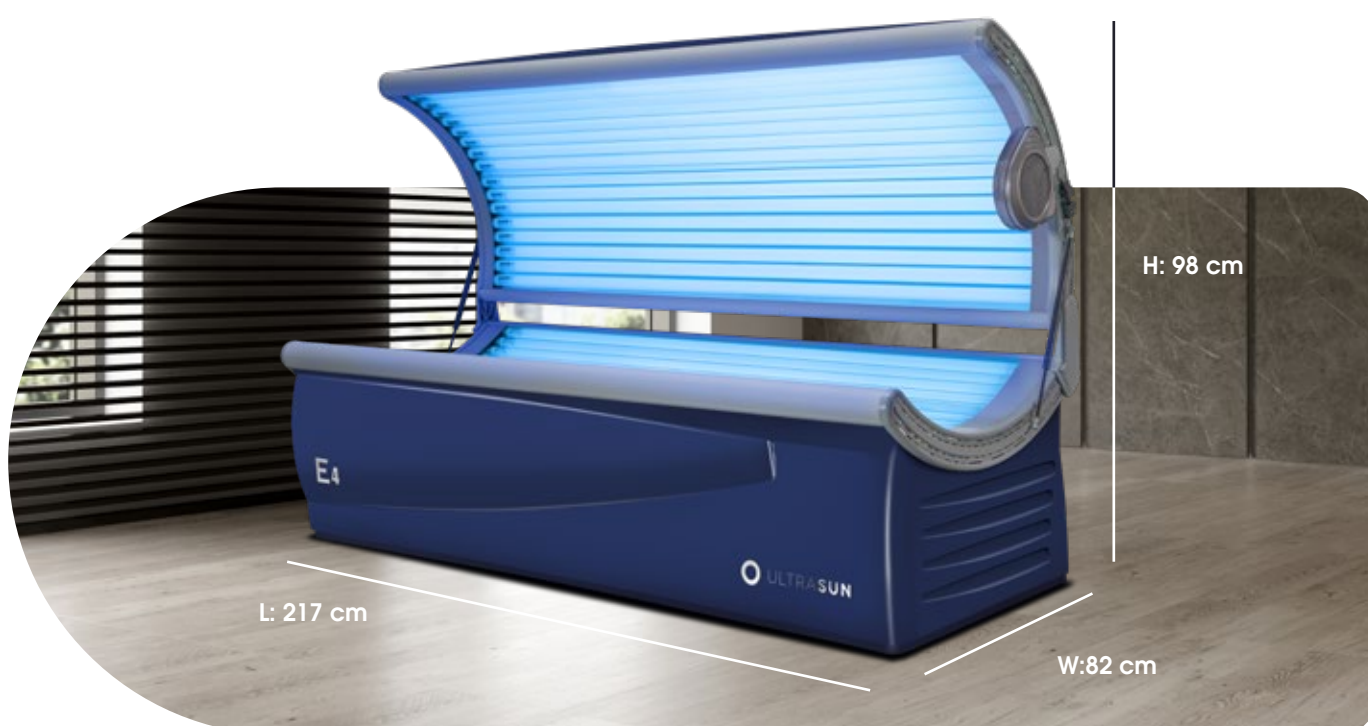
Available Colors



Dream White Metallic



Royal Blue Metallic



** Maintain 10-15 cm clearance around the device for air circulation.

Lamp Specifications UV3

Top Lamps:	14 x Sunfit XL3 120W E-Tronic 190 cm
Base Lamps:	14 x Sunfit XL3 120W E-Tronic 190 cm
Max. session time:	20 minutes

Any queries?

Please call Helionova
on 01603 789 010

Technical and Electrical Specifications

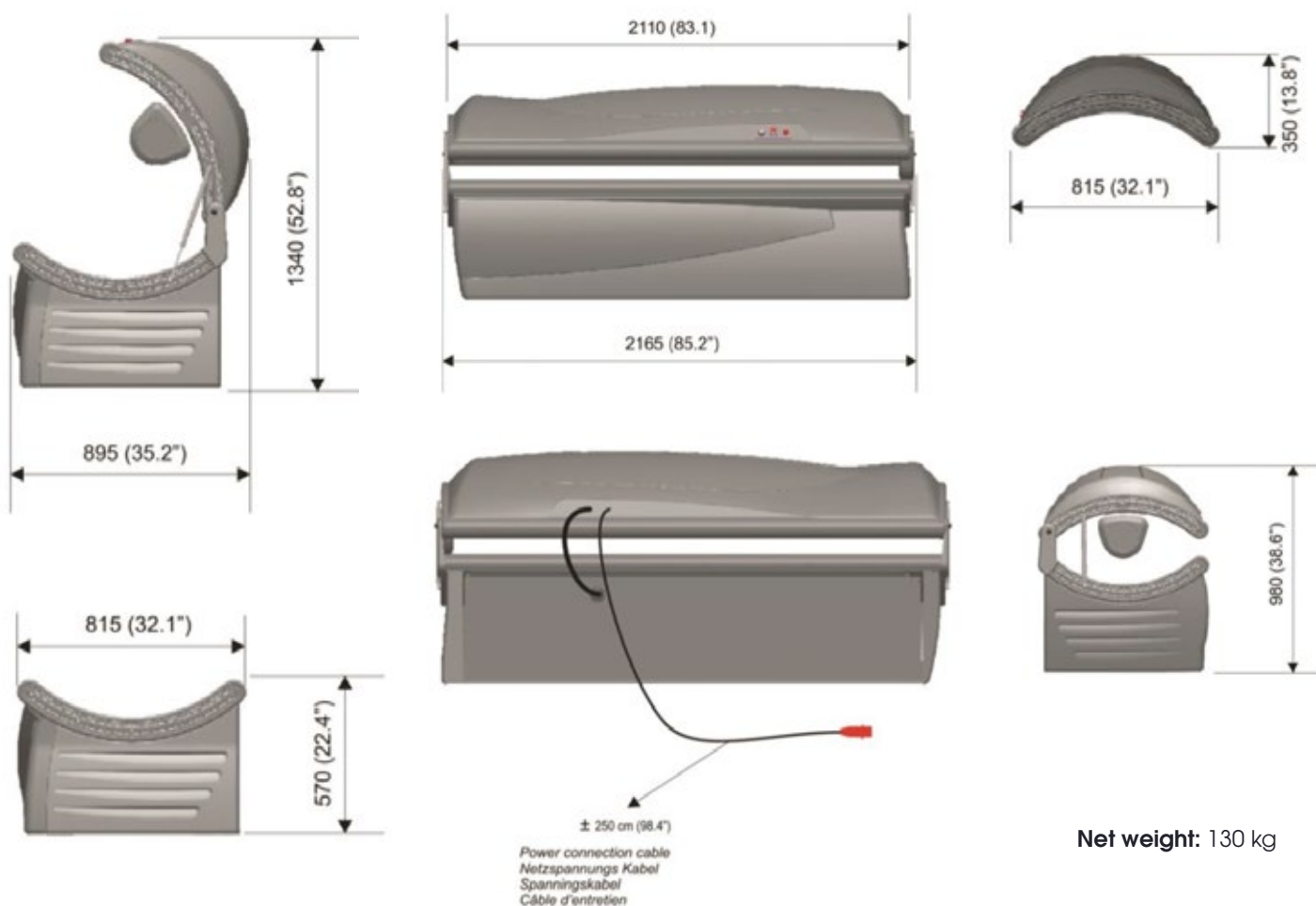
SINGLE PHASE

Socket requirement:	16A
Socket type:	F-Type plug
Trip size:	16A - C-type
Power consumption:	3,500W

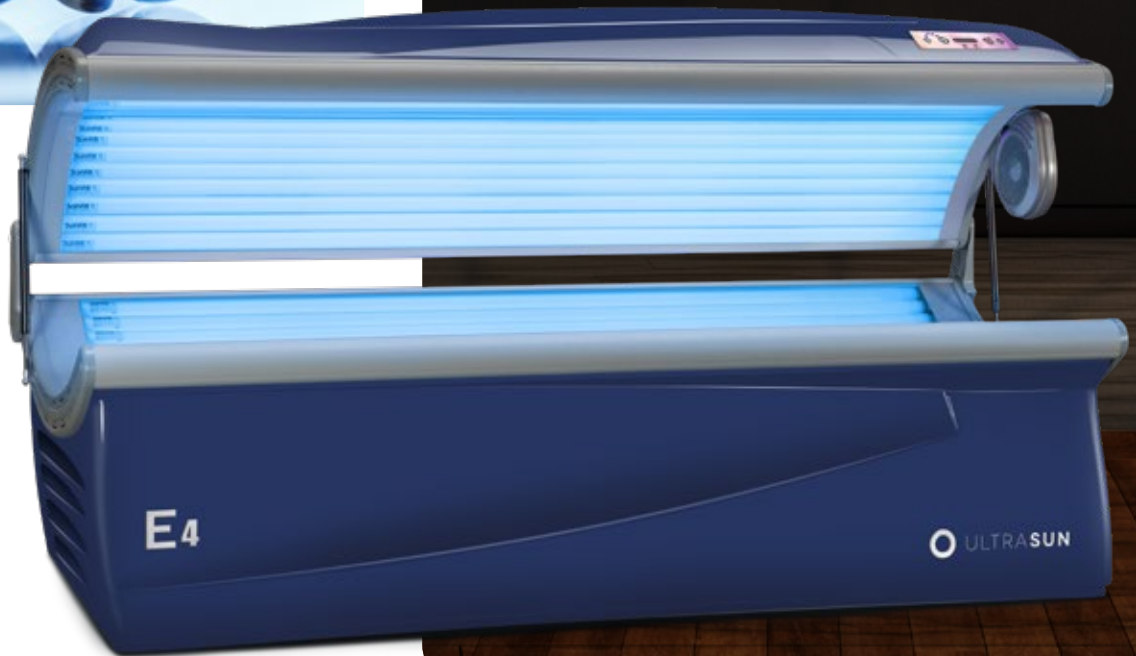
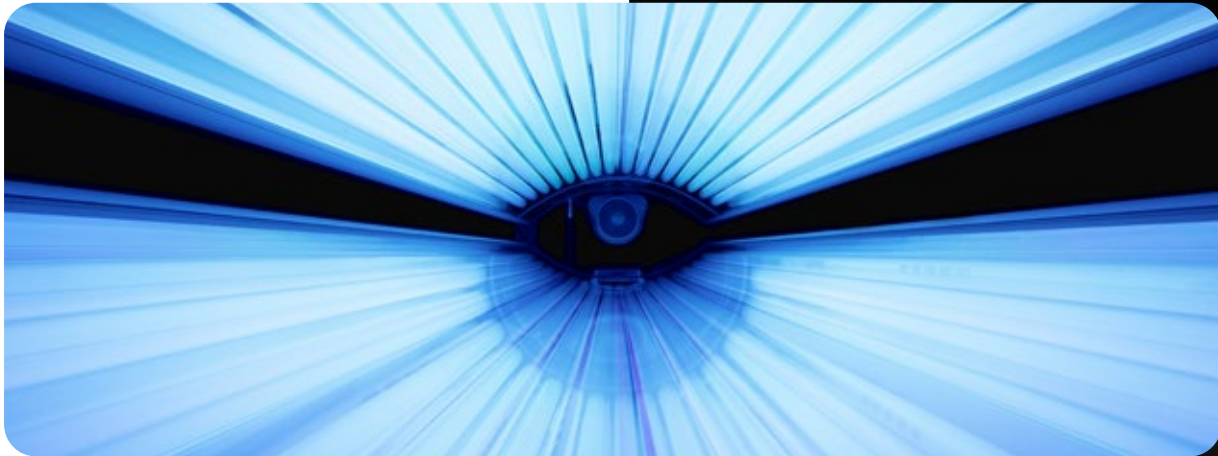


Weight and Dimensions

All dimensions in mm. Between brackets in inches.



Net weight: 130 kg



Hyperion House, Alston Road 01603 789010
 Norwich, Norfolk, NR6 5DS sales@helionova.co.uk
 United Kingdom helionova.co.uk